

Advent Houses

Kitty Franken © All Rights Reserved



Supplies

- Cardstock Red 8" x 8 1/2"
- Green 7" x 2 1/2 "
- Stickers 39825 transparent glitter
www.sparkraftent.com
12440 gold
- Ribbon Red
- Transparent sheet
- round corner punch small
- Colluzzle
- Magnolia stamp 103 Edwin winter sweater
www.magnoliastamps.us
105 Edwin with lantern

Step 1: With the 8 1/2 inch edge at the top and left fence, score at 2, 4, 6 and 8 inches.

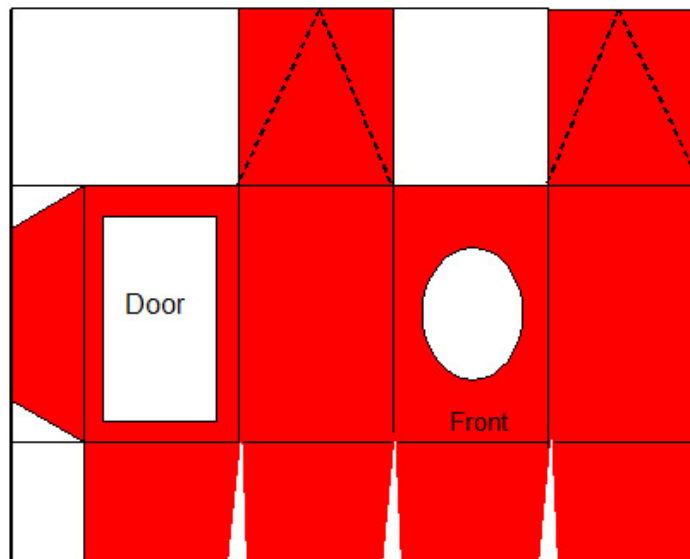
Step 2: With the 8 inch edge at the top and left fence, score at 2 and 5 1/2 inch.



Step 3: Cut as illustrated. Remove the two little tabs leaving the center one. On one side make three cuts cutting out the score lines. It is easiest to do this on the embossed side, the side with the bumps. **You will have 4 tabs.** On the other side cut everything away to leave **two tabs.** Refer to Cutting Diagram.

Cutting Diagram

NOT TO SCALE





Step 4: On two tabs that are on the same side, align as in photo, make a small pencil mark at the 1" groove on the left tab and the 5" groove for the second tab.



Step 5: Score as illustrated on the side that is going to be the outside of the box. Fold into box shape. Do NOT glue. Mark the back of the box (next to small tab) with a little pencil mark.

Step 6: Cut a little door so you can take out the treat. Cut the door on the back panel of the box, where you made your pencil mark. Use your Scor-Mat for measuring.

Note: I cut a template for my door. It measured 1 1/8" x 2 1/8". I traced around 3 sides deciding which side the door hinged. I scored this 4th side (wrong side of cs). Use an exacto knife on your Scor-mat to make openings. Fold back on scored line.

Step 7: Glue the box together. You may have to trim a little off the tabs, test first. Glue turret top. There will be a small, wide v shape opening at the very top.

Roof:

To give the roof texture



Step 1: With the 7" edge at the top and left fence, score at every half inch along the full length

Step 2: With the 2 1/2" edge at the top and left fence, score at every half inch.



Step 3: Use the Corner Rounder to scallop the edges.
Note: If you are using the Fiskar Treading Water Punch make your strip of paper 8" long.

Step 4: Score it in half, embossed side up.

Step 5: Punch a small hole in the middle of the scored line. Thread a loop of ribbon for the hanger.

The Advent Boxes have been designed to accommodate the Magnolia Stamps
It is very easy to adjust the size if you wish to make them smaller.