

# Gingerbread Brownstones

Diana Crick © 2007 All Rights Reserved

## **Supplies:**

Scor-Pal®

Cardstock 8 1/2 x 11 Gingerbread color

Small pieces of cardstock for doors, windows etc.

Crop-a dile (CAD)

Embellishments, ribbon, brads, punched shapes

Scor-Tape™

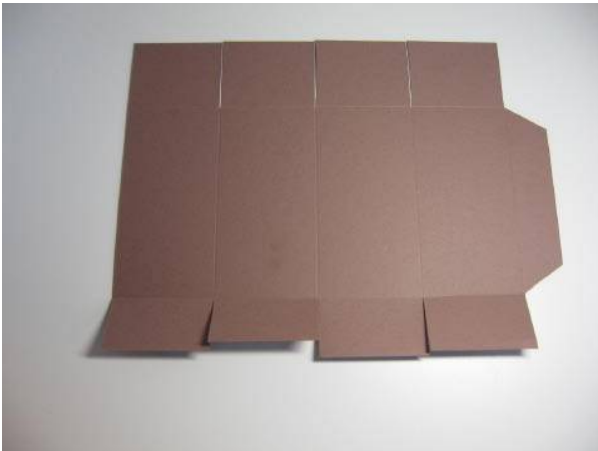
SU Key Tag Punch, Punches for windows

## **Step 1:**

With the 11" length along the top of the Scor-Pal score at 2 1/2", 5", 7 1/2" and 10".

## **Step 2:**

With the 11" length along the side fence score at 2 " and 7 ".



## **Step 3:**

Cut the bottom slits (1 1/2" panel)  
For the top slits cut first slit on the outside edge of the score line and a second cut on the other edge of the score line. You are cutting away a very small strip of paper. Cut off the small tabs on top and bottom as shown. Angle cut the edge panel



**Step 4:**

Fold your box together, glue side tab to the inside. Fold in the bottom, the last one being the one extending from the front of the box, glue. Embellish as you wish



On the end house I decided to add siding grooves. After I had done the scoring in Step 1 and 2, I scored between the top and bottom score lines at every half inch. Move the edge of the paper to the 1/4" line and score again at every half inch. This will give you 1/4" panels.

The windows are punched out cardstock with cellophane behind. I colored a piece of white cardstock with two Copic Markers, YR15 and Y15. The pine boughs are a punch made by McGill. I bought the "Strong Arm" after punching out dozens of boughs. I bruised the palm of my hand. I used the SU Key Tag punch for the door and a brad for the door knob. I varied how I cut my roofs.

I chose to make my goodies boxes as brownstones. Decorating as a true Gingerbread house would also be adorable. Most important of all, have fun!!!

Diana