

Lunch Pail Box

Kitty Franken© 2009
All Rights Reserved

Supplies

12x12 inch

Embellishments

Ribbon

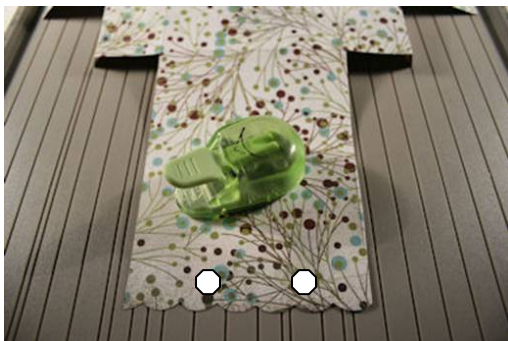
Round corner punch



Step 1: Score at 2", 2 1/2", 4", 8", 9 1/2" and 10".

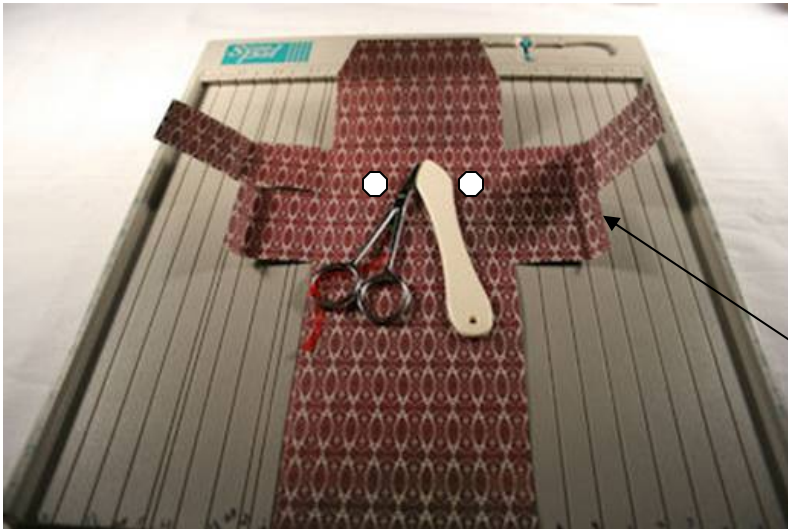
Step 2: Rotate the paper and score at 1", 3", 4 1/2" and 6 1/2".

Step 3: Cut as shown in photo.
The top flap in the photo shows angled corners. This is optional.



Step 4: Scallop the flap if you wish or use a corner rounder.

Step 5: Punch two holes in the long flap.



Step 6: Fold up box. Make a mark through the punched holes to locate where to punch underneath. The holes will be punched in the section that has the two long side flaps.

Step 7: Assemble box and glue side flaps into place. Thread ribbon through the inside holes. Fill your box with treats. Fold over long flap; bring ribbon to front and tie in bow