

DELIVERY TRUCK TEMPLATE

COORDINATING STAMP SET: DELIVERY GENT

DESIGNED BY SUE BERKER

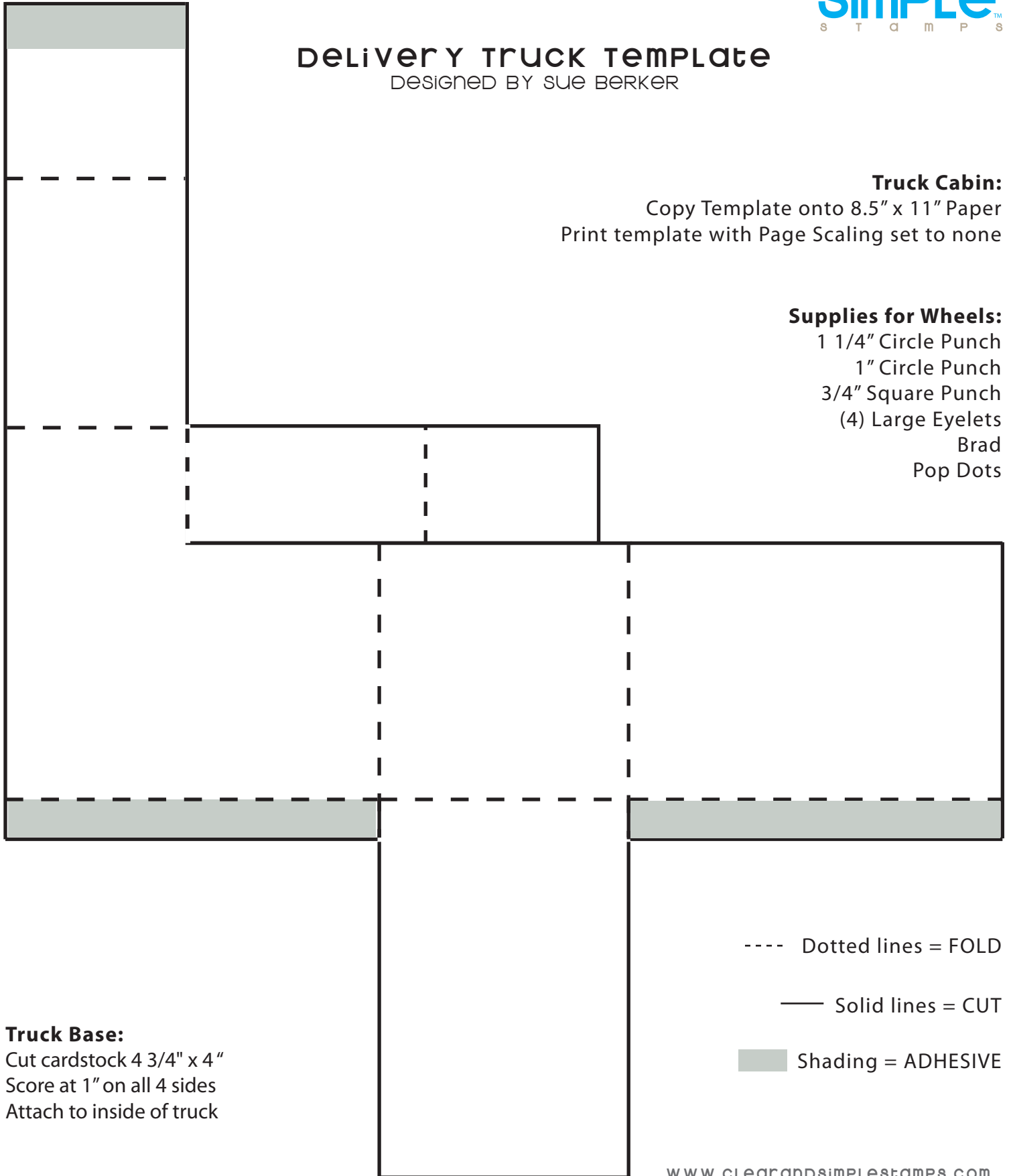
clear &
simple™
S T A M P S



FRAME

DELIVERY TRUCK TEMPLATE

DESIGNED BY SUE BERKER



Truck Cabin:
Copy Template onto 8.5" x 11" Paper
Print template with Page Scaling set to none

Supplies for Wheels:
1 1/4" Circle Punch
1" Circle Punch
3/4" Square Punch
(4) Large Eyelets
Brad
Pop Dots

Truck Base:
Cut cardstock 4 3/4" x 4"
Score at 1" on all 4 sides
Attach to inside of truck

----- Dotted lines = FOLD

————— Solid lines = CUT

■ Shading = ADHESIVE

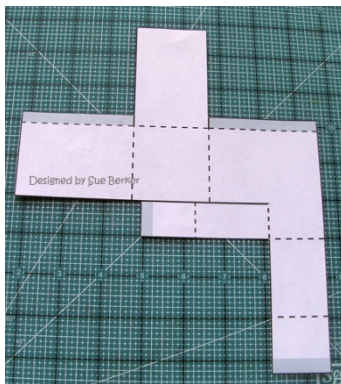
Because my printer will not print on heavier cardstock, I print off all templates on regular copier paper and use Scotch **temporary** adhesive to adhere the template to the cardstock and cut out both. (You can use whatever adhesive you want.) Be sure you put the adhesive on areas inside of the template lines and not outside of it.

Step one: Adhere template



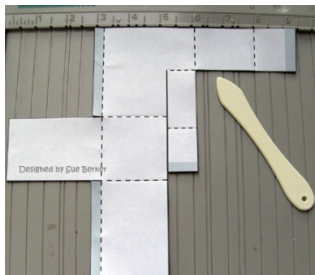
Step two:

Cut out template



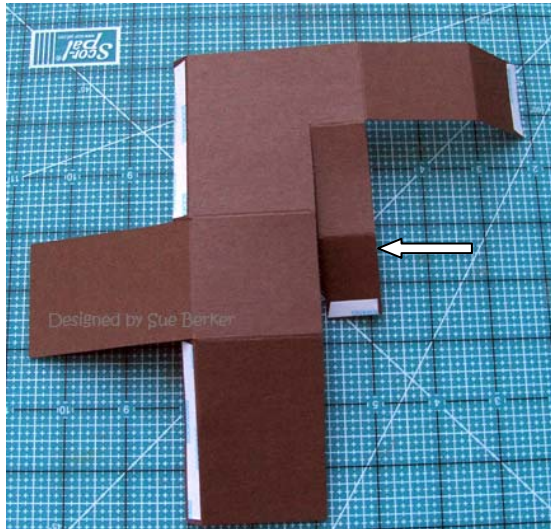
Step three

Score on dashed lines



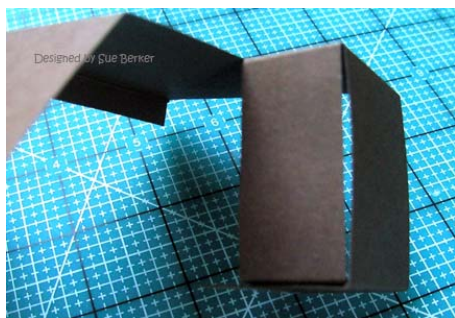
Step four

Fold on dashed lines and cut on solid lines. Adhere sticky tape (I use Scor-Tape) on the grey areas. Refer to the copier paper template for placement of sticky tape (the gray areas). In this photo I didn't have sticky tape in one place – it's where the arrow is pointing – and you need it there..



Step five

I like to adhere the skinny little piece that is kind of like the hood of the truck, first.



Step six

Continue adhering together



Step seven

Using an 1/8" circle punch, punch a hole for the door knob. I buy the door knobs at Cindy's store, here, <http://www.starlitstudio.net/hifatimho.html>



Step eight

Make the little box to go inside, according to the directions listed on the truck template. Adhere to the inside. This allows you to put a little gift or mini-card inside.

Step nine

Punch circles for wheels. For the inside circle I used Stampin'Up!'s large brads. Be creative – use whatever you have. Adhere to truck. I used Tomboy Mono Multi glue.



If you use the UPS or USPS logo, be sure to state the copyright if you load a photo of it in a gallery. What other kind of truck can you make? Milk truck, ice cream truck, pizza car? Maybe one of those Bob Cats – you could use wire mesh or netting on the top. Enjoy!