



Candy Nugget Boxes Revamped for Scor-Pal®

Our Guest Instructor is Sue Reynolds

© 2008 All Rights Reserved

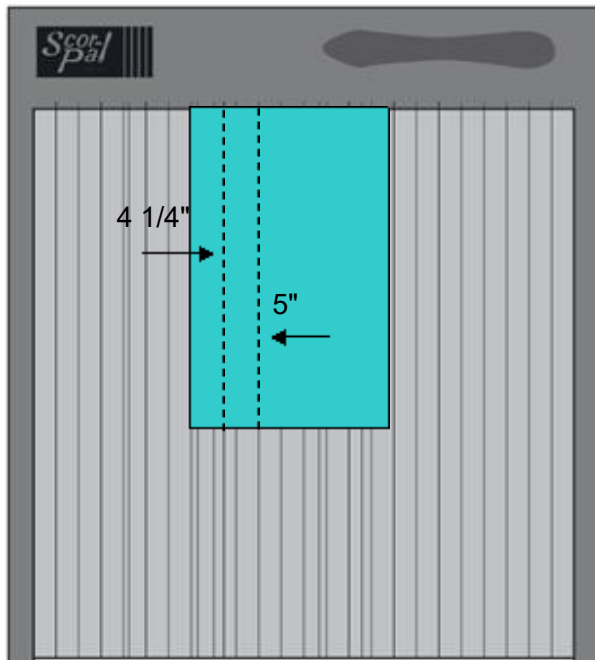
www.HotPawsCreations.blogspot.com



Sue resides in sunny, Orange County, California with her 3 adopted doggie fur babies. Sue has been crafting since she was a child. Her mother taught her many things about sewing, knitting, crocheting and cooking. Her father taught her all about woodworking and electronics. Rubber stamps were beginning to come out with more than just your name. When Creative Memories and Mrs. Grossman's stickers first came out, she was hooked. The dining room table was not for eating anymore, it was for the new hobby of scrapbooking. Now, being a lucky lady and retiring early from working as an Ultrasound Technologist to being able to stay home with her fur babies has been a crafter's dream. She built her own 6 ft. light table to be used for fabric cutting and the hope of friends sitting around it crafting as well. Becoming a Stampin' Up demonstrator opened up a whole new world of card making, paper crafting and meeting new people. Then one day finding the Scor-Pal mentioned on another crafter's blog, her curiosity guided her to this new fun tool. Having the time to work with paper patterns and modify them to work with the Scor-Pal is how the newly revamped "Nugget Box" tutorial came to be. Enjoy and don't eat all the chocolate before you give them away!

<p><u>Three Candy Box Single Row</u> 4 ½ x 6 in bottom 5 1/8 x 3 ¼ in lid</p>	<p><u>Seven Candy Box Single Row</u> 4 ½ x 10 in bottom 5 1/8 x 7 ¼ in lid</p>
<p><u>Four Candy Box Single Row</u> 4 ½ x 7 in bottom 5 1/8 x 4 ¼ in lid</p>	<p><u>Six Candy Box Double Row 3 + 3</u> 5 ¾ x 6 in bottom 8 3/8 x 3¼ in lid</p>
<p><u>Five Candy Box Single Row</u> 4 ½ x 8 in bottom 5 1/8 x 5 ¼ in lid</p>	<p><u>Eight Candy Box Double Row 4 + 4</u> 5 ¾ x 7 in bottom 8 3/8 x 4 1/4 lid</p>
<p><u>Six Candy Box Single Row</u> 4 ½ x 9 in bottom 5 1/8 x 6 ¼ in lid</p>	<p><u>Ten Candy Box Double Row 5 + 5</u> 5 ¾ x 8 in bottom 8 3/8 x 5 ¼ in lid</p>

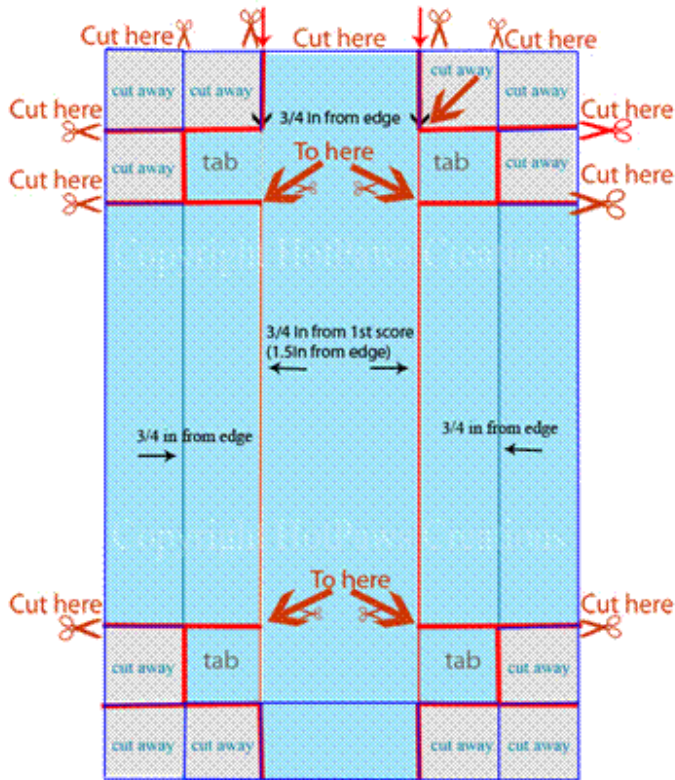
Bottom of Nugget Box



Bottoms of the above boxes are made by scoring ¾" from edge then ¾" from that score line (1 ½ from edge) on each side. Align the left edge of the paper to the **middle** of the 3 ½" groove. Score at 4 ¼" and 5". Repeat on all four sides. Then cut according to Diagram 1.

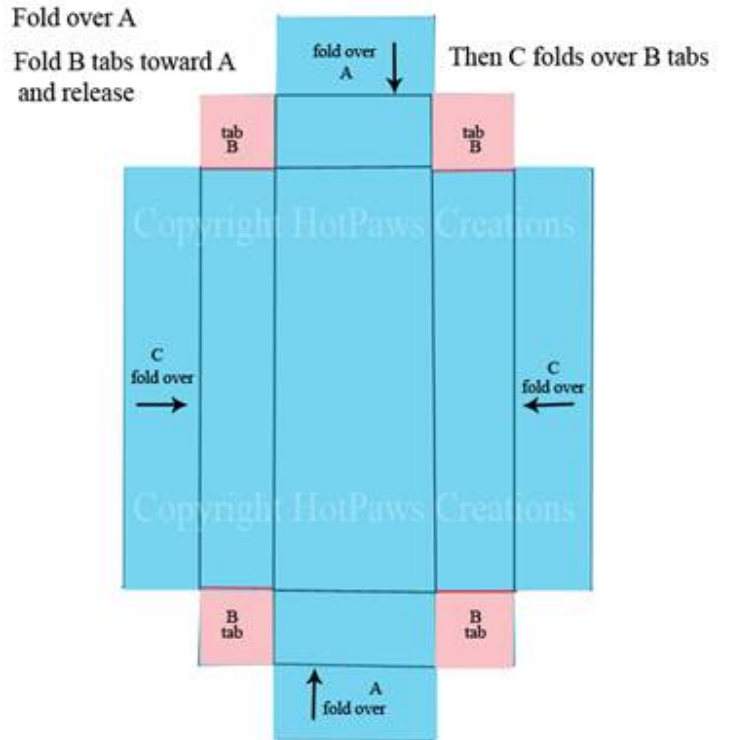
Fold tabs and glue. Then fold in double walls and glue. See Diagram 2.

Diagram 1

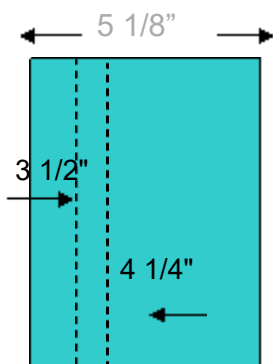


**Nugget Box Revamped
for Scor-Pal**

Diagram 2



Nugget Box Sleeve



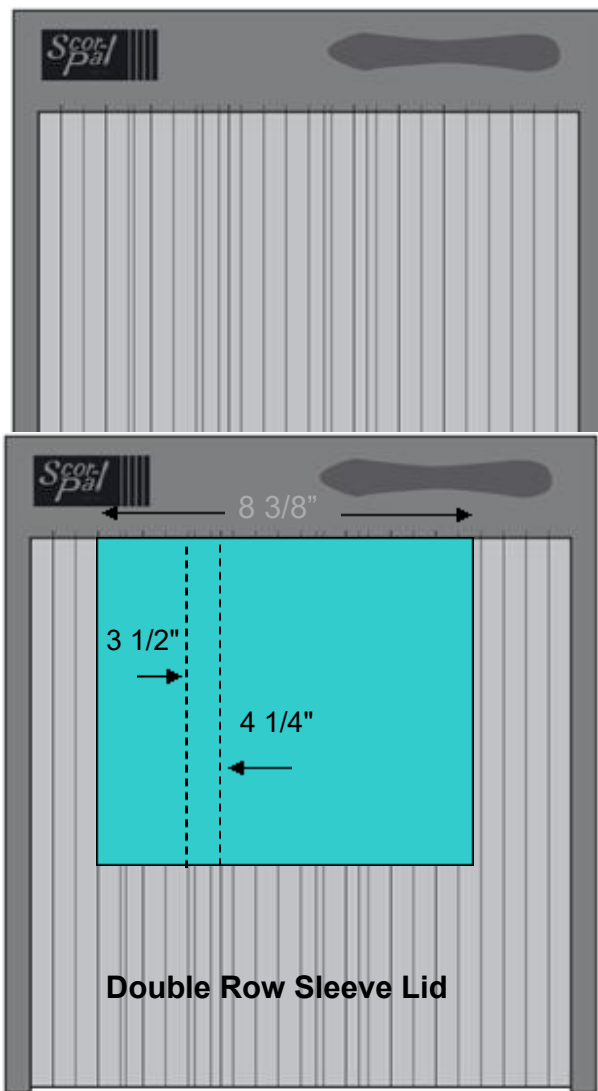
Single Row Sleeve Lid

Single row sleeve lids are scored 1 in from edge then $\frac{3}{4}$ from that score line ($1\frac{3}{4}$)

1. Align paper to the **middle** of the 2 1/2" groove. Score at 3 1/2" and at 4 1/4". Repeat on other side. You will have 4 scores in all.

Form a sleeve around filled nugget box and tape closed. Using a filled box will loosen the sleeve so it can be opened and slid easily for recipient! See diagram 3

Note: *Make sure you do not score the 5 1/8 side for single row boxes.



Double row sleeve lids are scored 2 in from edge then $\frac{3}{4}$ from that score line ($2\frac{3}{4}$)

1. Align paper to the middle of the 1 1/2" groove. Score at 3 1/2" and 4 1/4". Repeat on other side. You will have 4 scores in all.

Form a sleeve around **filled nugget box** and tape closed. Using a filled box will loosen the sleeve so it can be opened and slid easily for recipient!

Note: *Make sure you do not score the 8 3/8 side for double row boxes.

I would recommend making one out of scrap paper 1st and keep that as your model for the future. Also I would use Sticky Tape/Terrifically Tacky Tape/or Scor-Tape for holding box together.