

- Boxes Galore
- Diana's Star Box
- One Sheet Box
- Favor Box 2-4-6-8
- Fish Box
- Which Way Box?
- Maria's Card Box
- Make a Wish Window Box



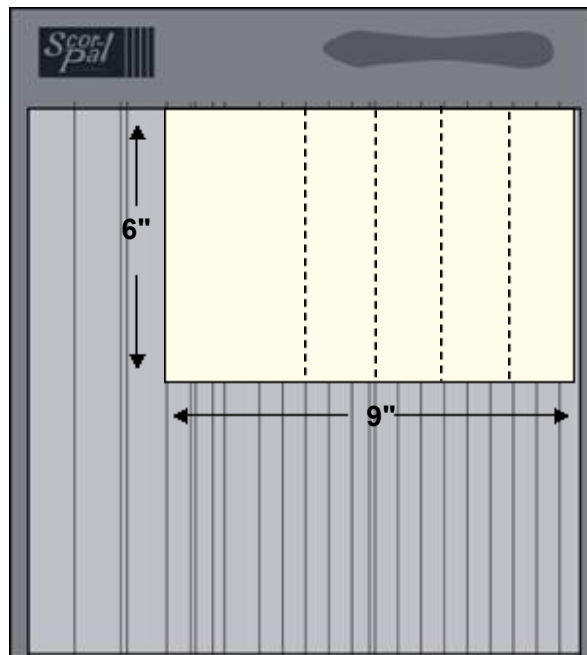
Our Guest Instructor is **Diana Crick**

Supplies:

• **Scor-Pal:**

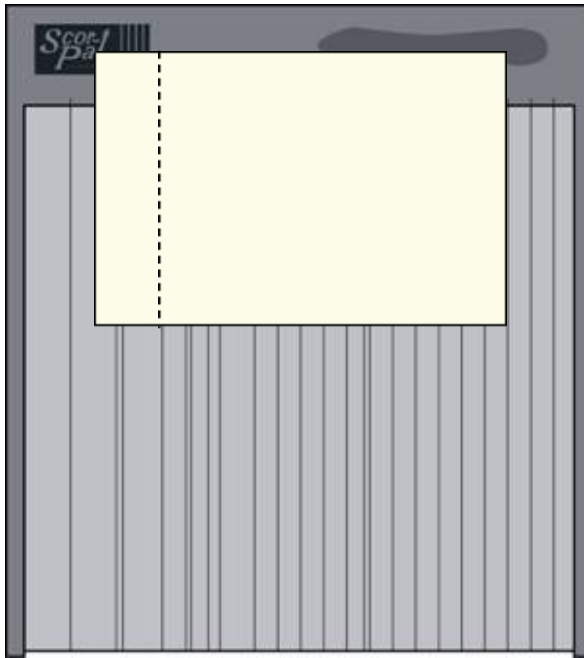
- Cardstock or Decorator paper **6" x 9"**. The box stands 4 1/2" tall.

- **Scor-Tape™** - double sided adhesive tape sold in the online store.
(Awesome stuff)

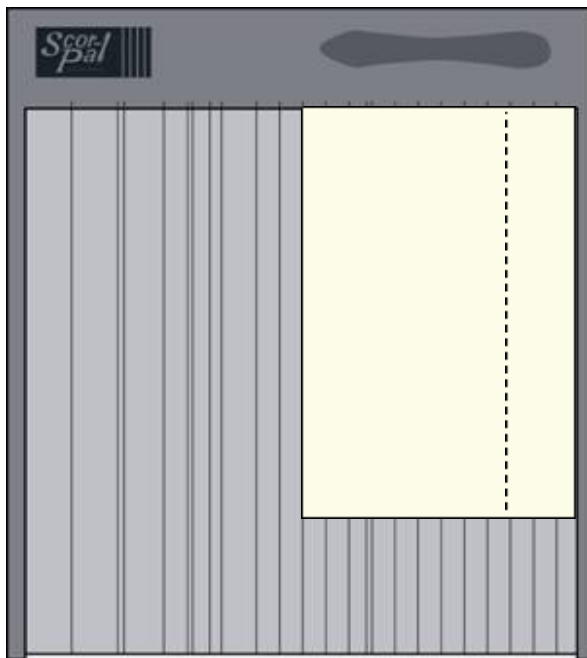


Step 1:

Paper oriented as illustrated score at 6", 7 1/2", 9" and 10 1/2".



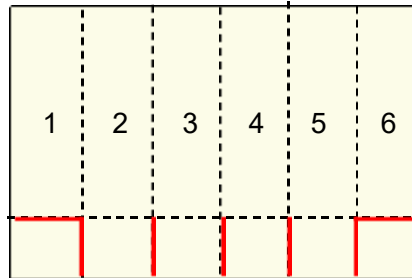
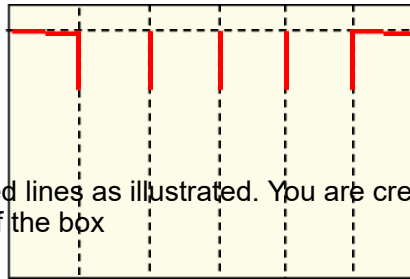
Step 2:
Paper oriented as illustrated, align left edge with the 1 1/2" mark. Score at 3".



Step 3:
Turn paper 90 degrees. Paper oriented as illustrated, previous score lines are not shown in the diagram. Score at 10 1/2"

Step 4:

Cut on the red lines as illustrated. You are creating the tabs for the bottom of the box



Step 5:

Sections 2,3,4,5, form the box. Section 1 and 6 are folded back to form the fin. Looking down on the box shape you will see why I called this a "Tropical Fish Box".



Step 6:

If you wish to add decorator paper panels glue them first while your paper is flat. Form your box and flaps. Glue Panel 1 and 6 together. With **Scor-Tape™**.

Tuck in the bottom tabs to form the bottom of the box. Glue the last tab folded in.



fun friend
nice friend
kind friend
wise friend
happy friend
my friend